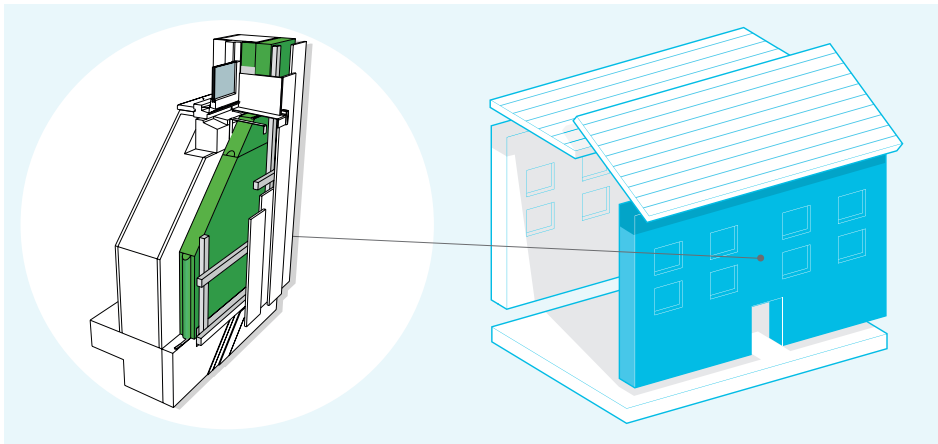


# Retrofit System for External Wall Insulation Clad



## System Performance

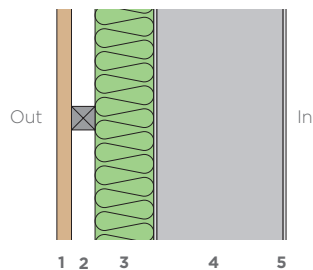
**u - values** 0.30 - 0.10

**y - values** 0.05 - 0.02

**airtightness** 5 - 0.6 @50pa

The system complies with the most stringent of standards - from baseline building regulations through to Passivhaus. The system is suitable for all external clad finishing options including brick, stone, timber, zinc, etc. All components for the system are available from NBT.

## Cross-section of system

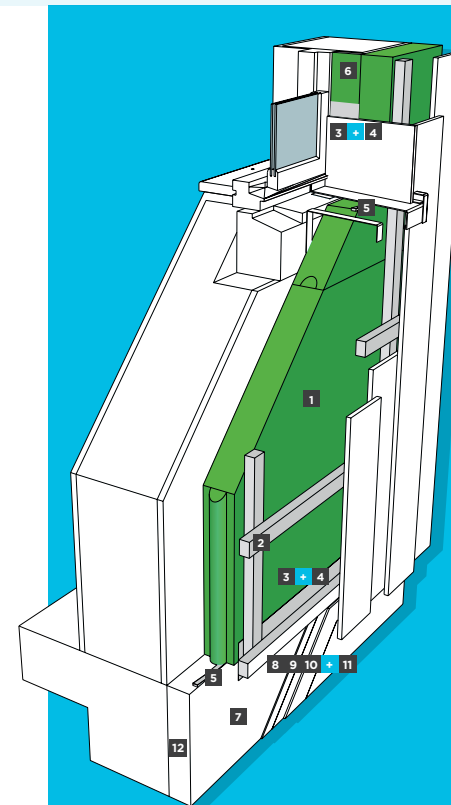


1. Cladding system (timber, brick, screen etc.)
2. Battened to create a 40mm ventilated void
3. **ISOLAIR MULTI** 60/80/100/120mm or more
4. Masonry substrate
5. Plaster

## How NBT systems compare to standard build



# Components & Accessories for NBT External Wall Insulation System: Clad



<p>1 Pavatherm-Plus Pavatherm-Combi** or Isolair P6,7,8</p>	<p>2 MQL-ST P24</p>
<p>3 Pavatape 150, External P18</p>	<p>4 Pavabase Primer P19</p>
<p>5 ISO-Bloco 600 6-15 P20</p>	<p>6 Reveal Board P15</p>
<p>7 Plinth board (XPS) P34</p>	<p>8 MC 55 External Base Coat P25</p>
<p>9 Render and Plaster Mesh P34</p>	<p>10 Primer P29</p>
<p>11 External Top Coat P26</p>	<p>12 DS 27 P29</p>

\* Please refer to [www.natural-building.co.uk](http://www.natural-building.co.uk) or the contents page of this pack to find more information about the range of NBT products

\*\* Pavatex FBA black breathable membrane should be used with open cladding

System build up

