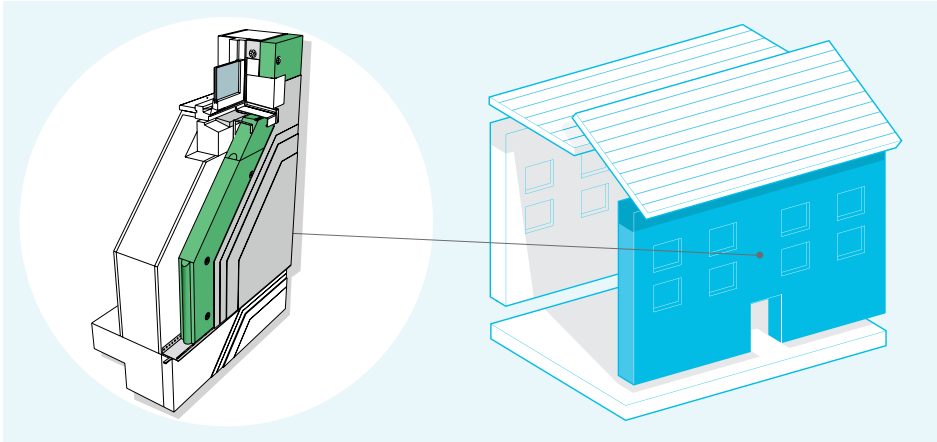


Retrofit System for External Wall Insulation Rendered

NOTE: DIFFUTHERM HAS NOW BEEN REPLACED BY ISOLAIR



System Performance

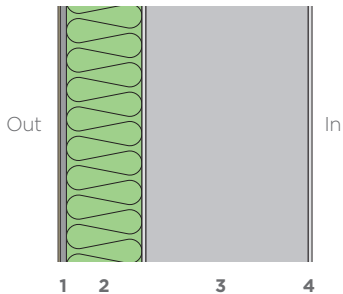
u - values 0.26 - 0.10

y - values 0.05 - 0.02

airtightness 5 - 0.6 @50pa

The system complies with the most stringent of standards - from baseline building regulations through to Passivhaus. The system is available in an extensive number of render options including, colour, texture and weathering resistance. All components for the system are available from NBT.

Cross-section of system



1. NBT 2-coat render system
2. NBT DIFFUTHERM 60/80/100/120mm or more
3. Masonry substrate
4. Plaster

How NBT systems compare to standard build



Components & Accessories for NBT External Wall Insulation System: Rendered

1 Diffutherm P9	2 MC55, External Base Coat P25
3 External Top Coat P26	4 Primer P29
5 Render and Plaster Mesh P34	6 Base Rail P30
7 APU Mesh Window Stop Bead P31	8 NTU P22
9 ISO-Bloco 600 6-15 P20	10 Plinth board (XPS) P34
11 Corner Mesh P31	12 DS 27 P29
	13 Reveal Board P15

* Please refer to www.natural-building.co.uk or the contents page of this pack to find more information about the range of NBT products

System build up



Acara Concepts Ltd
Killossery, Kilsallaghan,
Co Dublin K67 E7N3, Ireland
www.acaraconcepts.com
info@acaraconcepts.com
Tel IRL: +353 (0)1 8409 286
Tel UK: 020 7998 1690