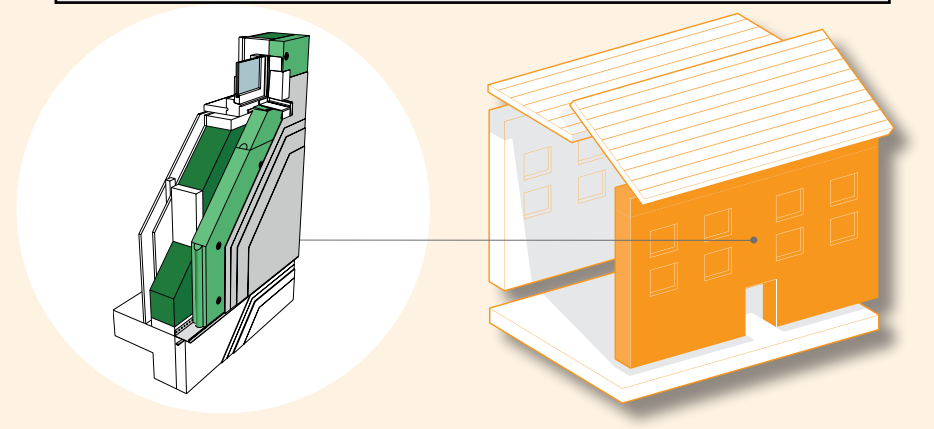


# New Build System for Timber Frame Render

**NOTE: DIFFUTHERM HAS NOW BEEN REPLACED BY ISOLAIR**



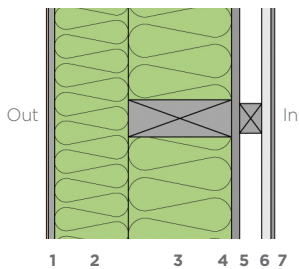
## System Performance

u - values 0.26 - 0.10

y - values 0.05 - 0.02

The system complies with the most stringent of standards - from baseline building regulations through to Passivhaus. The system is available in an extensive number of render options including, colour, texture and weathering resistance. All components for the system are available from NBT.

## Cross-section of system

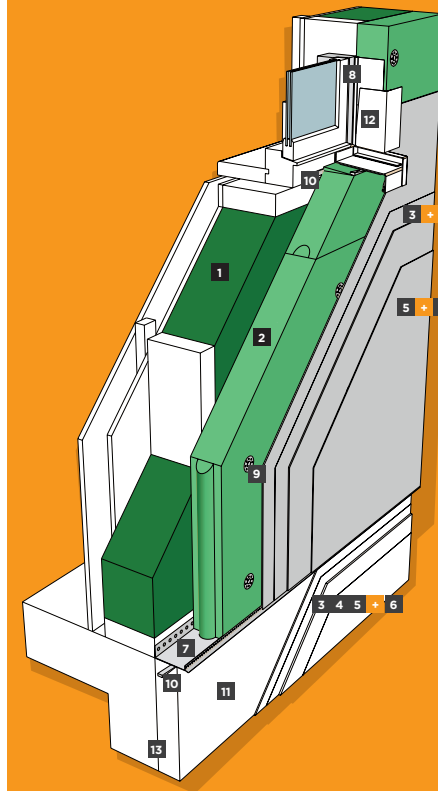


1. NBT 2-coat render system
2. NBT DIFFUTHERM 60/80/100/120mm
3. Stud fully filled with NBT PAVAFLEX
4. Racking board incl. airtightness detail (eg OSB 12/15mm)
5. Service void 25 mm (can be insulated for improved performance)
6. Plasterboard 12.5 mm
7. Plaster, skim and NBT emulsion paint

## How NBT systems compare to standard build



# Components & Accessories for NBT System for Timber Frame: Render



<p>1 Pavaflex P16</p>	<p>2 Diffutherm P9,10</p>
<p>3 MC 55 External Base Coat P25</p>	<p>4 Render &amp; Plaster Mesh P34</p>
<p>5 Primer (for pre-mixed top coat) P29</p>	<p>6 External Top Coat P26</p>
<p>7 Base Rail P30</p>	<p>8 APU Mesh Window Stop Bead P31</p>
<p>9 STR-H P22</p>	<p>10 ISO-Bloco 600 2-6 P20</p>
<p>11 Plinth board (XPS) P34</p>	<p>12 PVC Corner Mesh P31</p>
<p>13 DS 27 P29</p>	

\* Please refer to [www.natural-building.co.uk](http://www.natural-building.co.uk) or the contents page of this pack to find more information about the range of NBT products

System build up

